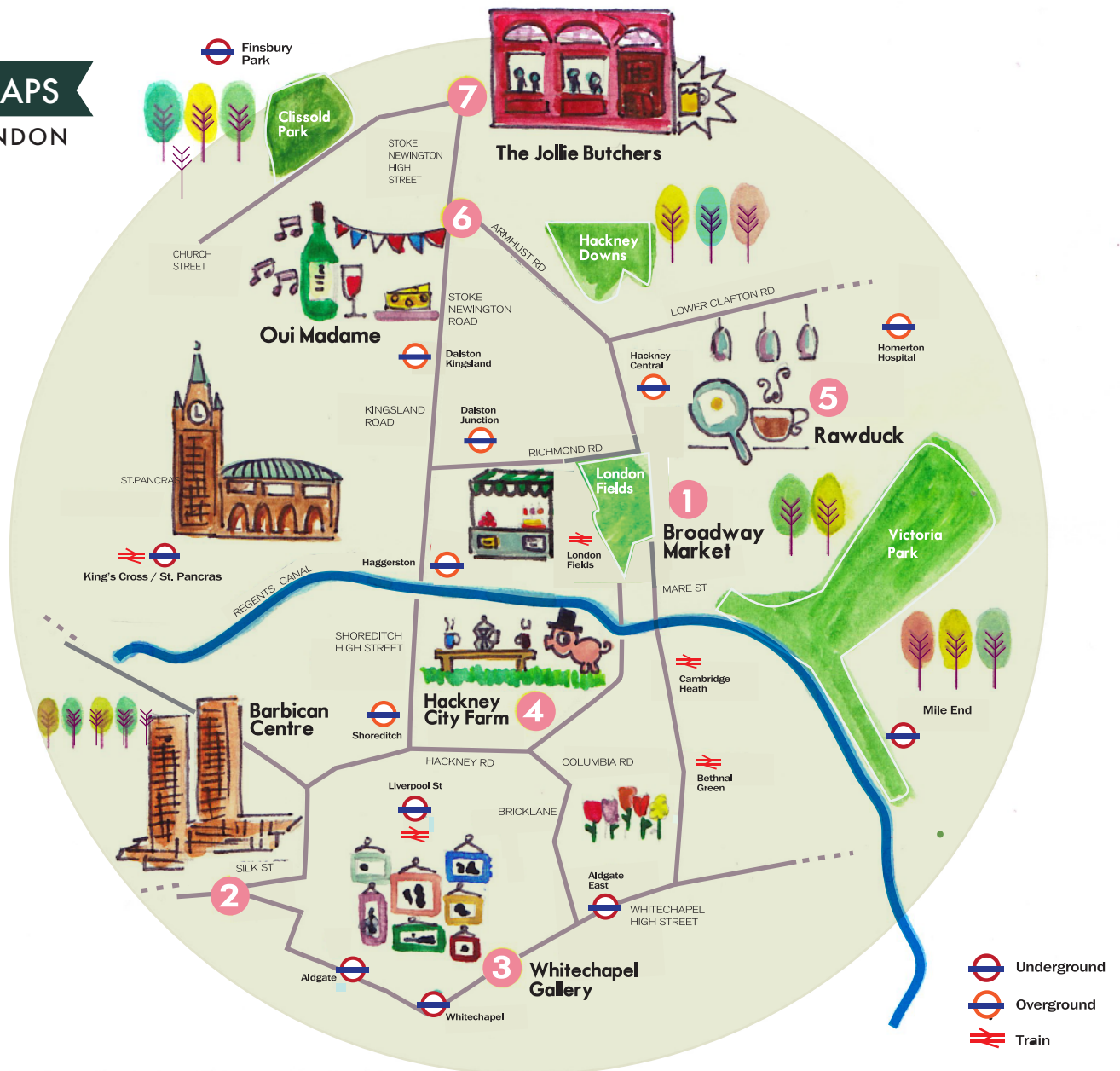


MINIMAPS

EAST LONDON



UNCONVENTIONAL MUSTS

This is a quick guide to nice little places that usually are overlooked by conventional travel books. If you have limited hours to get a taste of a city's real life, this is your ideal minimap.

"East London is nowadays is the juxtaposition of a very interesting but relatively recent process of gentrification. In many corners you still can spot footprints of former suburbia/industrial feeling, but the area keeps growing as an art, tech and sustainability hub, that manages to keep strong and visible influences of all the different cultures that integrate the proud local community. And of course, there's also the hipsters. Loads of hipsters. But hipster-loathing is so 2-years-ago. Just relax and enjoy!"

1 BROADWAY MARKET

Nice street with cafes, libraries and local shops. Market day: Saturdays.

www.broadwaymarket.co.uk

Broadway Market E8 4PH

Street Mon - Sun 10h - 20h, Market Sat 9h-16h

Overground: London Fields, Hackney Central

2 BARBICAN CENTER

Brutalist architecture mecca and cultural center.

barbican.org.uk

Silk Street EC2Y 8DS

Mon - Sat 9h - 23h, Sun 12h - 23h

Underground: Barbican, Moorgate

3 WHITECHAPEL GALLERY

Great alternative exhibitions. Next to Bricklane.

whitechapelgallery.org

77-82 Whitechapel High Street E1 7QX

Mon Closed, T-D 11h - 18h, Th 11h - 21h

Underground: Whitechapel, Aldgate

4 HACKNEY CITY FARM

Farm animals, flowers, coffee & a pottery workshop. Right next to Columbia Flower Market, visit on Sunday if you want to experience the combo!

hacknecityfarm.co.uk

1a Goldsmiths Row E2 8QA

Mon Closed, Tue-Sun 11h - 16h30

Underground: Bethnal Green

5 RAWDUCK

Lunch, dinner, but specially weekends' brunch!

rawduckhackney.co.uk

197 Richmond Road E8 3NJ

Mon 18h - 22h30h, Tue-Fri 9h - 22h30

Sat /Sun 10h - 22h30

Overground: Hackney Central

6 OUI MADAME

French bistro with a nice underground dancefloor. Great cocktails.

oui-madame.co.uk

182 Stoke Newington Road N16 7UY

Mon-Tue 18h - 24h, Wed-Thr 18h - 01h

Fri-Sat 18h - 02h, Sun 11h - 22h

Overground: Dalston Kingsland, Stoke Newington

7 THE JOLLY BUTCHERS

Good old English pub. Beers, whiskys, Sunday roasts.

jollybutchers.co.uk

204 Stoke Newington High Street N16 7HU

Mon-Thu 16h - 24h, Fri 16h - 01h, Sat 12h - 01h

Dom 12h - 23h

Overground: Stoke Newington.

Underground: Finsbury Park



CHECK OTHER COOL MINIMAPS
@ SUPERMINIMAPS.COM



LONDON

UNCONVENTIONAL MUSTS

Edited and illustrated by Ana Laya

MINIMAPS® 2015

Share your thoughts and ideas with us: #superminimaps

This could be the beginning of a new Minimaps, write on!

